

Year 7 Literacy and Numeracy Catch Up Premium Funding 2015/16

What is it?

The literacy and numeracy catch up premium is to provide extra support for pupils in Year 7 who have not met the expected standard in English or Maths.

The funding could be spent in the following ways:

- Individual tuition
- Intensive small group tuition
- External services and materials
- Summer schools that help pupils catch up over a short time period

How much does our school get?

The literacy and numeracy catch up premium for the 2015 to 2016 school year is £18,000 and is for 36 pupils.

How is the Pupil Premium Grant spent?

There are a number of ways in which the School uses this funding to improve the standards of English or Maths for the identified group of pupils. The breakdown of the spending, and its impact, can be seen below.

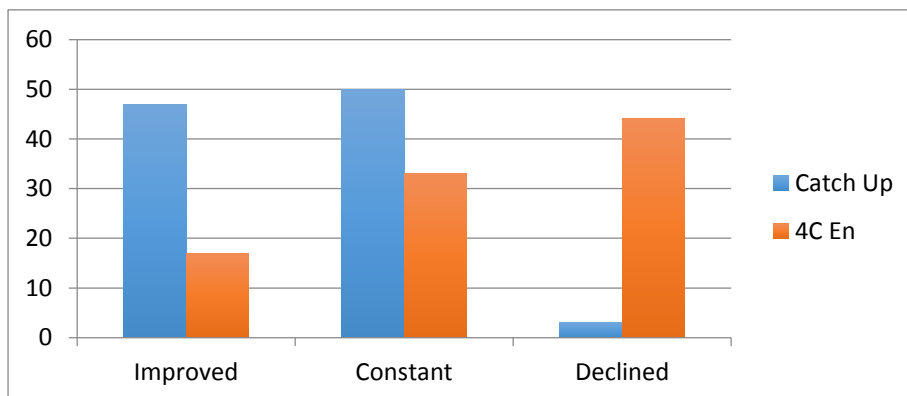
What did we spend the funds on last year and what was the impact?

Literacy and numeracy catch up premium 2015/16			
Project	Cost	Purpose	Number of Students
PACE	£5000	To provide intensive small group support over the course of the year to improve literacy and numeracy.	14
Literacy Groups	£1000	To provide short-term, targeted support for identified pupils who are not making the required standard in English.	8
EAL Literacy Groups	£1300	To improve literacy where EAL was a barrier to success	10
Mentoring	£1000	To support the progress of pupils in literacy and numeracy, including building self confidence	8

Literacy support in ASD Base	£1000	To develop the literacy skills of ASD pupils using a qualified English teacher	3
2x TAs and Class Size - Maths	£5000	To provide a smaller number of pupils in the lowest set in Y7 and to place two TAs in that group for additional support	20
Reading resources at low ZPD	£2000	To ensure a broad range at the right interest level for this cohort	36
Additional numeracy resources	£1700	Numeracy catch-up training for Maths TA	20

Impact of English Catch-Up

Comparison with pupils arriving on 4c in English shows impact of catch up against those with a similar starting point who are not eligible for the premium.



Impact of Maths Catch-Up

Comparison with pupils arriving on 4c in Maths shows impact of catch up against those with a similar starting point who are not eligible for the premium.

