

10- HOUR EXAM – across 2 days where students will produce their final outcome/s for the externally set assignment

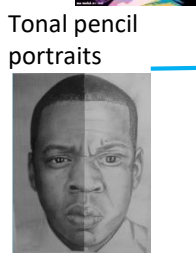
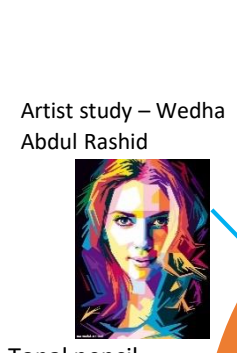
Art and Design Learning Journey



- Artist research
- Ideas
- Artist copies and style
- Experimentation with materials and techniques
- Refining ideas
- Photography
- Design ideas
- Colour trials

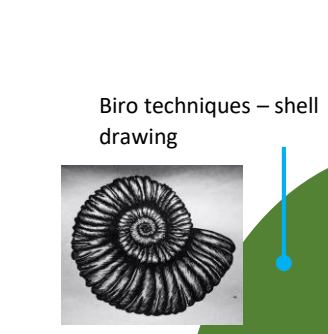
Component 2: Externally set assignment

5-hour PPE (mock)
Final piece/s and evaluation



Celebrities

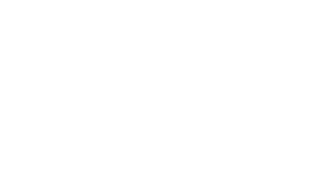
Work in style of Sian Storey



Marine Life



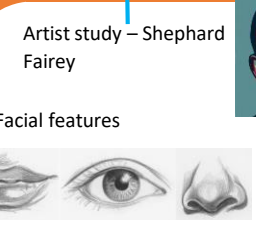
Pop Art and Portraiture



Experimentation and refining, using a variety of materials.



Researching artists and linking to own work

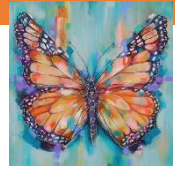


Acrylic paint techniques



Insects

Collage and mixed media



Artist study – Sian Storey



3D letters



Clay tile designs



Observational drawing – tonal pencil



Artist study Sarah Graham



Food

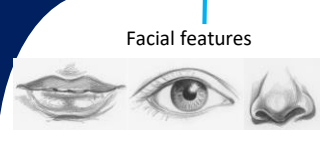
Designing and poly tile printing



Artist study Georgia O'Keeffe



Oil pastel techniques – artist copy of O'Keeffe



Culture



Artist study – Roy Lichtenstein

Proportions of the face



Artist study – Romero Britto



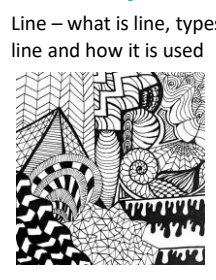
Pop art style self portrait



Tone



Colour theory



Line – what is line, types of line and how it is used

10

Intro to GCSE Art



Identity – skills project



Ed Fairburn – how a place makes a person

Jenny Saville – acrylic painting



Colour pencil and watercolour biscuits

A01

Component 1:
Project 1
Students choose from 3 starting points

A02

Gallery visit

Researching artists and linking to own work

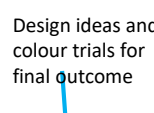
A03

Experimentation and refining, using a variety of materials. Discovering which materials are strengths.

A04



Final piece/s and evaluation



Design ideas and colour trials for final outcome

Annotation and recording ideas through drawing

Producing work in style of artists

YEAR 11

Component 1:
Project 2
Independent choice

YEAR 8

Natural Form



welcome

YEAR 7

Elements of Art